

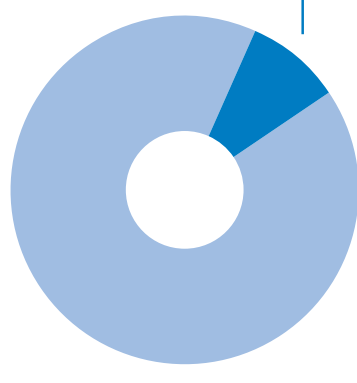


# INDUSTRIAL STRENGTH CLIMATE RESULTS

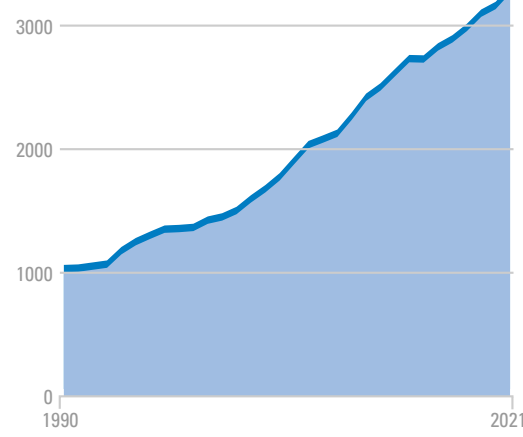


CLIMATE  
ACTION  
RESERVE

## Industrial emissions are a significant and growing climate challenge



Emissions from industry, including chemical and cement production, account for 9% of global greenhouse gas (GHG) emissions.<sup>1</sup>



Since 1990, industrial emissions have surged 225%, making them the fastest-growing source of GHGs.<sup>2</sup>

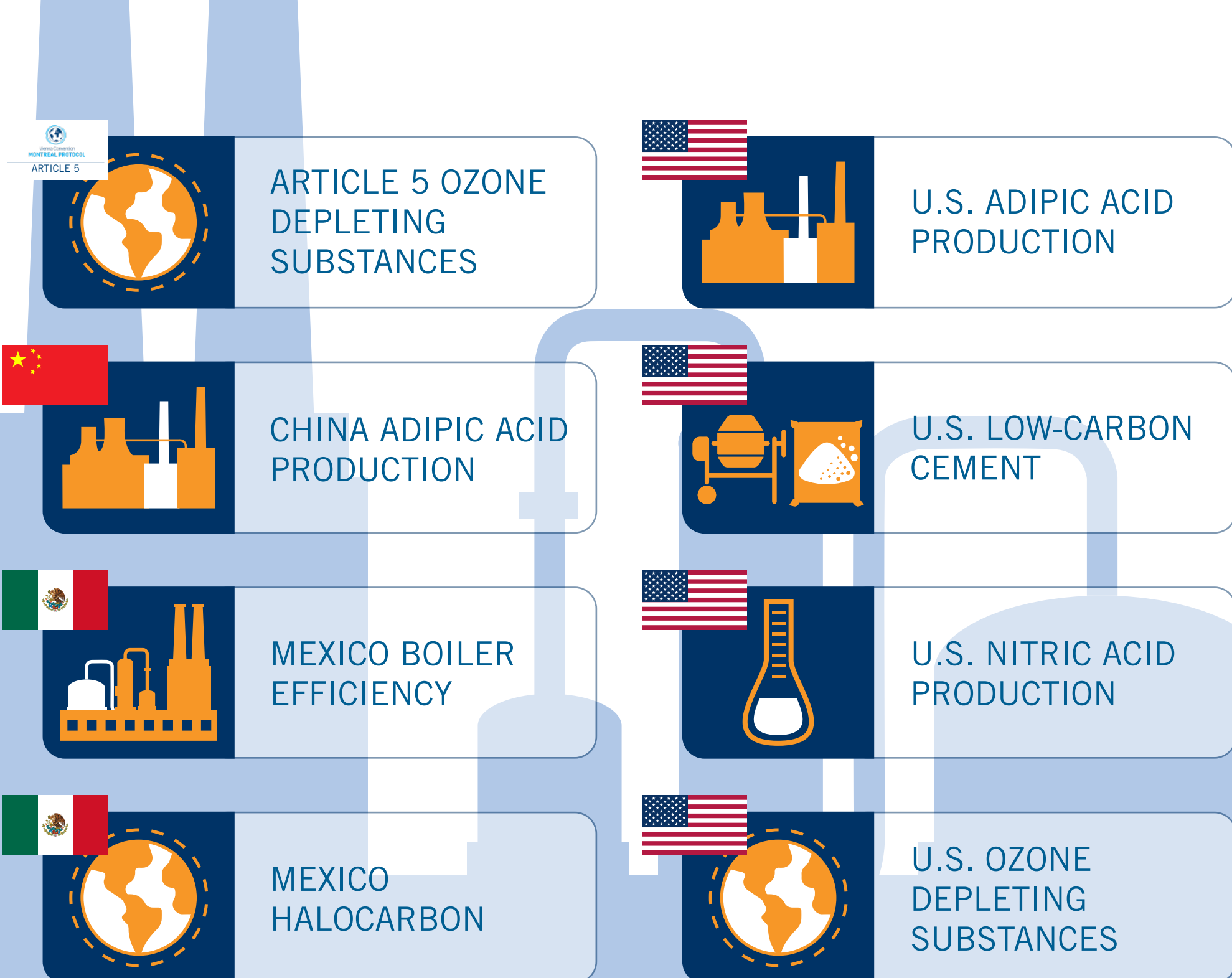
## The Reserve is leading the response

The Climate Action Reserve is at the forefront of addressing industrial emissions with rigorous, high-quality protocols that ensure accurate accounting, transparent reporting, and third-party verification of emission reductions from industrial abatement activities, including from nitric acid production, adipic acid production, and cement production.

Industrial carbon credits issued by the Reserve are trusted across the market to deliver real, additional, and permanent emissions reductions that drive significant climate results. By setting the standard for integrity and impact, the Reserve is recognized as the leading authority in advancing high-quality industrial carbon reductions and shaping the future of industrial decarbonization.

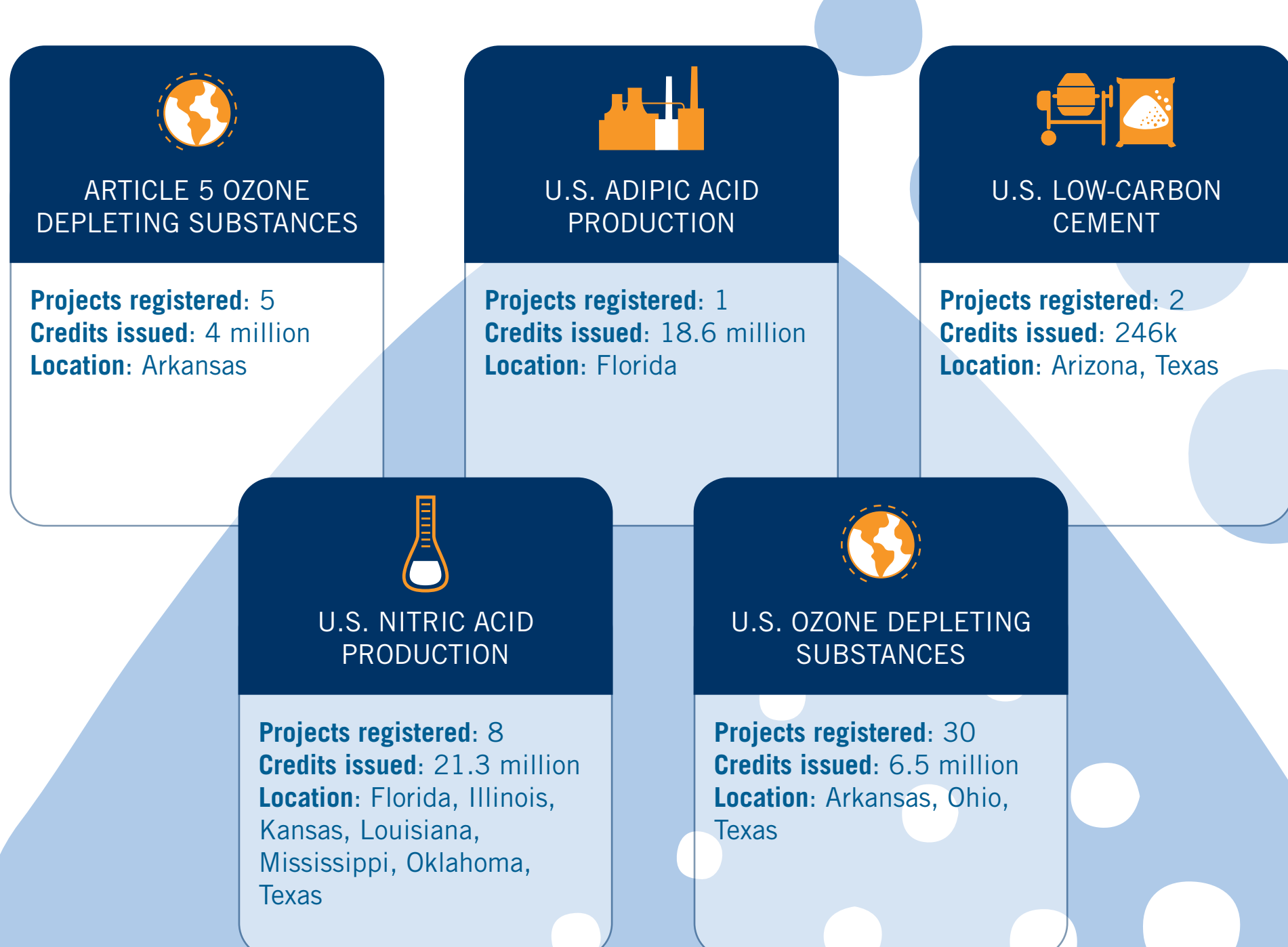
## INDUSTRIAL CARBON PROTOCOLS

AVAILABLE FROM THE RESERVE



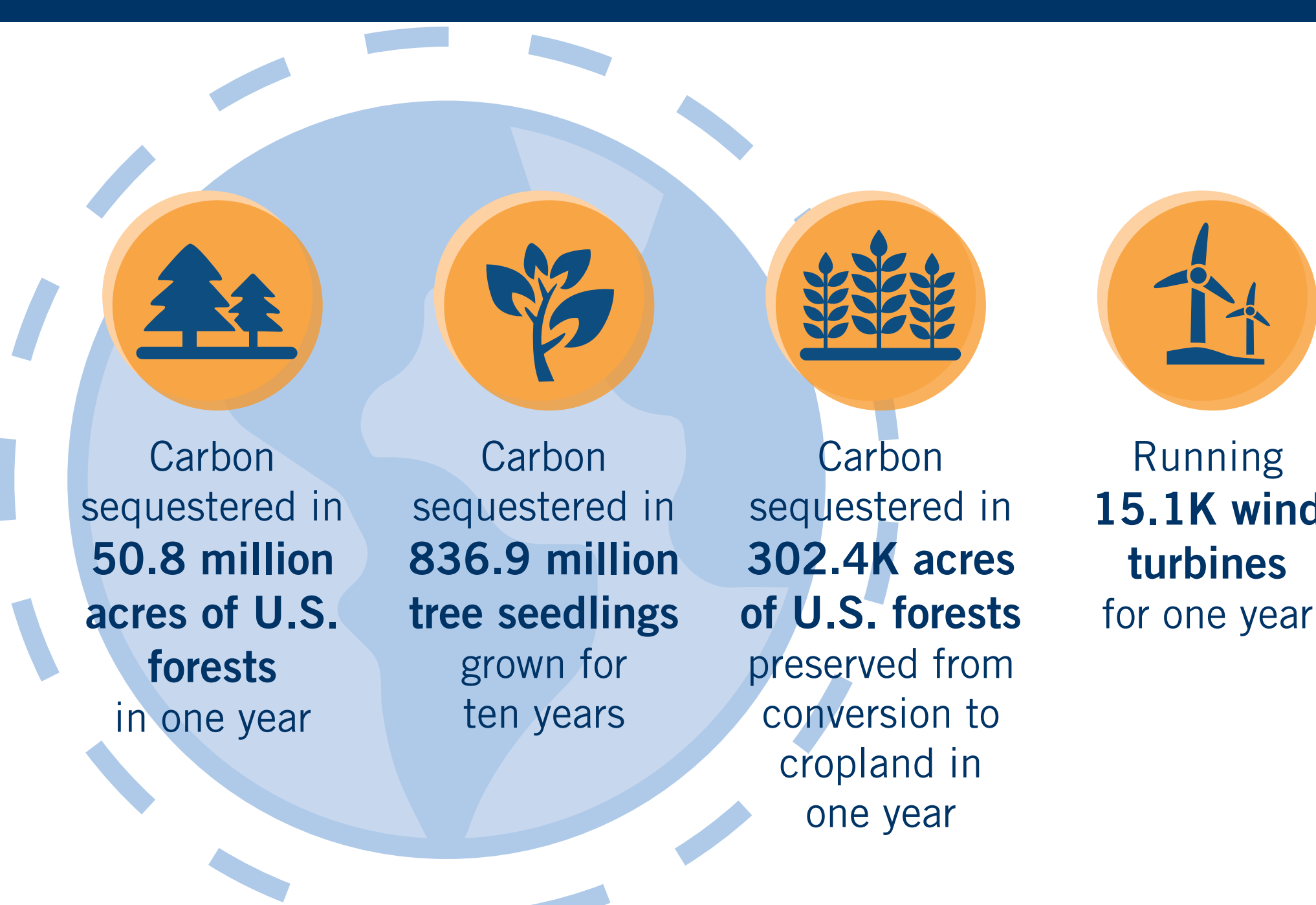
## INDUSTRIAL CARBON PROJECTS

AND CREDITS REGISTERED IN THE RESERVE



## INDUSTRIAL CARBON PROJECTS

HAVE REDUCED **50.6 MILLION** CO<sub>2</sub>e GHGS, EQUIVALENT TO



## INDUSTRIAL CARBON ACHIEVES SIGNIFICANT GHG REDUCTIONS THAT ARE



REAL



ADDITIONAL



PERMANENT



VERIFIED



ENFORCED

For more information:  
[climateactionreserve.org](https://climateactionreserve.org)

### Source:

- [unep.org/interactive/sectoral-solution-climate-change/](https://unep.org/interactive/sectoral-solution-climate-change/)
- [wri.org/insights/4-charts-explain-greenhouse-gas-emissions-countries-and-sectors](https://wri.org/insights/4-charts-explain-greenhouse-gas-emissions-countries-and-sectors)

[September 16, 2025]